



SWI uPVC SEWERAGE PIPE & FITTINGS



NOVAPLAST PAKISTAN (PVT.) LTD. CORPORATE HEAD OFFICE

Showroom & Office No. 9,

Ground Floor Annum Estate, Shahrah-e-Faisal, Karachi.

Ph: +92 21 3454 0510, +92 21 34321723 & 24

Email: info@nagroup.co, pool@nagroup.co, pool@cyber.net.pk

website: www.nagroup.co

SWI uPVC SEWERAGE PIPE

SWI BRAND uPVC SEWERAGE/DRAINAGE PIPE

With a wide range of uPVC drainage pipes and fittings covering a size range from 50mm up to 200mm, SWI offer complete solution for our customer's piping needs. Our range of uPVC systems offers comprehensive solutions required to complete any domestic or industrial drainage system. SWI drainage pipes and fittings are manufactured with solvent welding sockets and which satisfies the various requirements of projects, designers and installers.

APPLICATION AREAS

- * Soil sewage
- * Grey water
- * Waste water
- * Black water transportation

It can be used inside and outside of the residential buildings, commercial buildings, sanitary facilities, laundries, schools etc. Due to its smooth internal surface even the stickiest wastes are discharged very fast.

STANDARD : BS EN-1329

Pipe

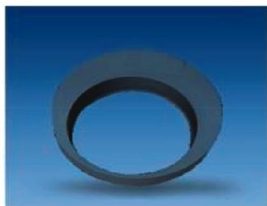
No	Items Description	Size (mm)
1	uPVC Pipe	50 mm
2	uPVC Pipe	75 mm
3	uPVC Pipe	110 mm
4	uPVC Pipe	160 mm
5	uPVC Pipe	200 mm




SWI/TETRA FLOW uPVC SEWERAGE FITTINGS

SWI BRAND uPVC SEWERAGE/DRAINAGE FITTINGS

Reducing Bush




Reducing Bush

Image	Size
	50 x 40mm
	75 x 50mm
	110 x 50mm
	110 x 75mm
	160 x 110mm
	200 x 160mm

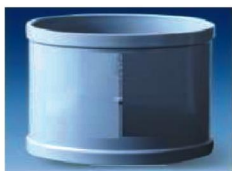
Level Invert Taper/Reducing Socket/Bush




Level Invert Taper

Image	Size
	75 x 50mm
	110 x 50mm
	110 x 75mm
	160 x 110mm
	200 x 160mm

Socket



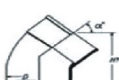
Socket

Image	Size
	50mm
	75mm
	110mm
	160mm
	200mm

Obtuse Bend / Elbow 45



Obtuse Bend

Image	Size
	50mm
	82mm
	110mm
	160mm
	200mm

Bend / Elbow 90



Bend

Image	Size
	50mm
	75mm
	110mm
	160mm
	200mm

Access Bend / Plug Elbow



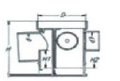
Access Bend

Image	Size
	75mm
	110mm
	160mm
	200mm

Floor Gully / Multi-Floor Trap / Gully Trap



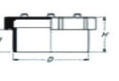
Multi-Floor Trap

Image	Size
	110 x 75mm

Access Cap & Plug



Access Cap


Image	Size
	50mm
	75mm
	110mm
	160 mm
	200mm

SWI/TETRA FLOW uPVC SEWERAGE FITTINGS

Y-Tee / Single-Branch



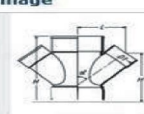
Y-Branch

Image	Size
	50mm
	75mm
	110mm
	160mm
	200mm

Double Y-Tee / Double-Branch



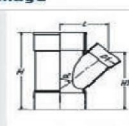
Double Y-Branch

Image	Size
	110 x 110mm
	160 x 110mm
	160 x 200mm
	110 x 75 mm
	200 x 160 mm
	200 x 200 mm

Reducing Y-Tee



Reducing Yee-Tee

Image	Size
	75 x 50mm
	110 x 50mm
	110 x 75mm
	160 x 110mm
	200 x 160mm

Sweep Branch / Tee



Tee

Image	Size
	50mm
	75mm
	110mm
	160mm
	200mm

Access Tee / Plug Tee



Access Tee

Image	Size
	75mm
	110mm
	160mm
	200mm

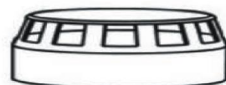
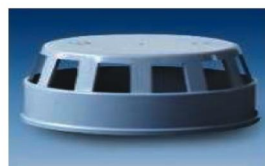
End Cap & Plug



End Cap

Image	Size
	50mm
	75mm
	110mm
	160mm
	200mm

Vent Terminal



Vent

Image	Size
	50mm
	75mm
	110mm
	160mm
	200mm